

# - NOTICE OF MEETING -

## AUSTIN TRANSIT PARTNERSHIP BOARD OF DIRECTORS

### ANNUAL JOINT PARTNERSHIP MEETING WITH AUSTIN CITY COUNCIL AND CAPMETRO BOARD OF DIRECTORS

City of Austin Permitting and Development Center - Room 1406  
6310 Wilhelmina Delco Drive, Austin, Texas 78752

WEDNESDAY, NOVEMBER 30, 2022 | 1:00 PM

---

#### ~ Agenda ~

#### 1. Call to Order

#### 2. Discussion Item

1. Staff Briefing and Discussion on the Project Connect Annual Management Report. No action will be taken.
2. Staff Briefing and Discussion on the Status of Light Rail Implementation Plan. No action will be taken.

#### 3. Adjournment

### ADA COMPLIANCE

*Reasonable modifications and equal access to communications are provided upon request. Please call (512) 389-7525 or email [Lynn.Trumbul@atptx.org](mailto:Lynn.Trumbul@atptx.org) if you need more information.*

ATP has resumed in-person board meetings and are streamed live.

**BOARD OF DIRECTORS:** *Veronica Castro de Barrera, Chair; Steve Adler, Vice Chair; Tony Elkins; Jeffrey Travillion; Juan Garza; Gina Fiandaca (ex officio); Dottie Watkins (ex officio).*

The Board of Directors reserves the right to adjourn into executive session at any time during the course of this meeting to discuss any of the matters listed above as authorized by Texas Government Code Chapter 551, including, but not limited to: Sections 551.071 (Litigation/Consultation with Attorney), 551.072 (Deliberations regarding real property), 551.073 (Deliberations regarding gifts and donations), 551.074 (Deliberations regarding personnel matters) or 551.076 (Deliberations regarding deployment/implementation of security personnel or devices), and 551.087 (Deliberations regarding Economic Development negotiations).

Date: November 18, 2022



# Annual Joint Partnership Meeting

November 30, 2022

# November 30, 2022 Meeting Agenda

## A. Calls to Order

## B. Discussion Items

**Agenda Item No. 1:** Staff Briefing and Discussion on the Project Connect Annual Management Report.

**Agenda Item No. 2:** Staff Briefing and Discussion on the Status of Light Rail Implementation Plan.

## C. Adjournments



# Agenda Item 1

Staff Briefing & Discussion on the  
Project Connect Annual Management Report

# Annual Management Report: *Highlights*

- A Focus on Equity
- Project Updates
- Equitable Transit-Oriented Development (ETOD)
- Investment in Displacement Prevention
- Community Driven

# Joint Commitment: *Equity Goals & Metrics*



## KPIs

Identify goals to create equitable, innovative, and holistic policies, processes, and procedures for Project Connect



## Metrics

Measure goals across Project Connect



## Decision-Making

Explain how the goals and metrics support decision-making process



## Outcomes

Continue to measure and update the public on the outcomes



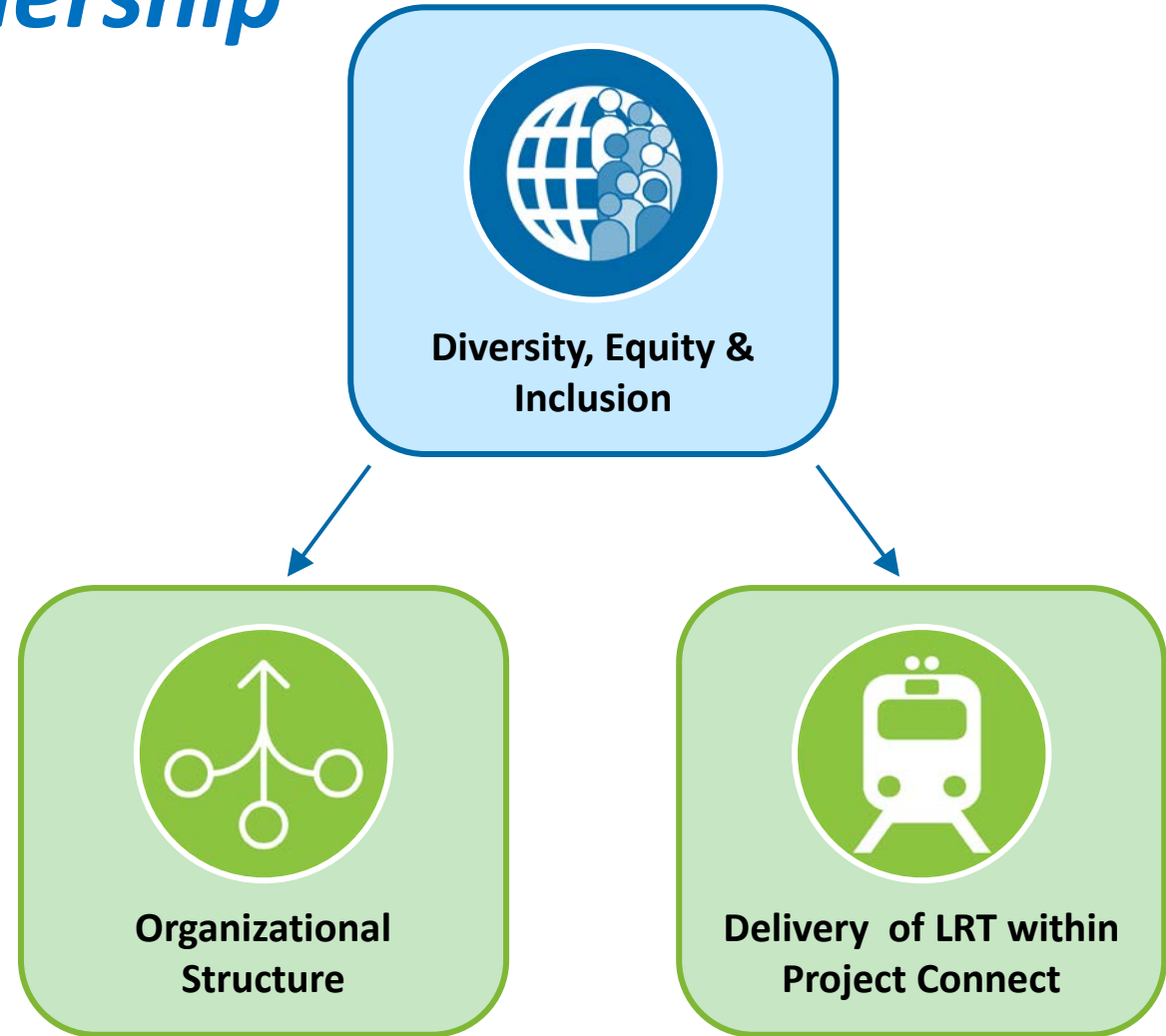
# Understanding Equity



# Equity: Austin Transit Partnership

## Highlights:

- Building internal infrastructure
- Creating and launching policies and training
- Strategy to embed equity across organization





# ATP Workforce and Equity: *Policies Update*

## Joint Powers Agreement Between Austin Transit Partnership and Capital Metropolitan Transportation Authority and the City of Austin

This Joint Powers Agreement (“Agreement”) is entered into between Austin Transit Partnership (“ATP”), a joint local government corporation created under Ch. 431 of the Texas Transportation Code, the City of Austin, Texas (the “City”), a home-rule municipality incorporated by the State of Texas, and Capital Metropolitan Transportation Authority (“Capital Metro”), a transportation authority and political subdivision for the State of Texas organized under Chapter 451 of the Texas Transportation Code, each a “Party” and collectively referred to within this Agreement as the “Parties”.



Adopted Title VI Program Plan



Implemented Disadvantaged Business Enterprise Program Plan



Initiated Workforce Development Strategy



Strengthened Collaboration with Community Advisory Committee

# MetroRail Red Line: *Capital Projects Underway*

## Lakeline-Leander Double Tracking Project

- First Project Connect project to break ground (January 2021)
- Substantially complete with ribbon cutting scheduled this winter

## McKalla Station

- Groundbreaking celebration with partners & community held July 2022
- On-time and on-budget; scheduled completion Fall 2023 (ahead of 2024 Austin FC season)
- Station construction includes new active transportation connections through partnership with the City

## Broadmoor Station (Uptown ATX)

- P3 Partnership between CapMetro, Brandywine Realty Trust and Charles Schwab
- Groundbreaking held January 2022
- On-time and on-budget; scheduled completion in early 2024





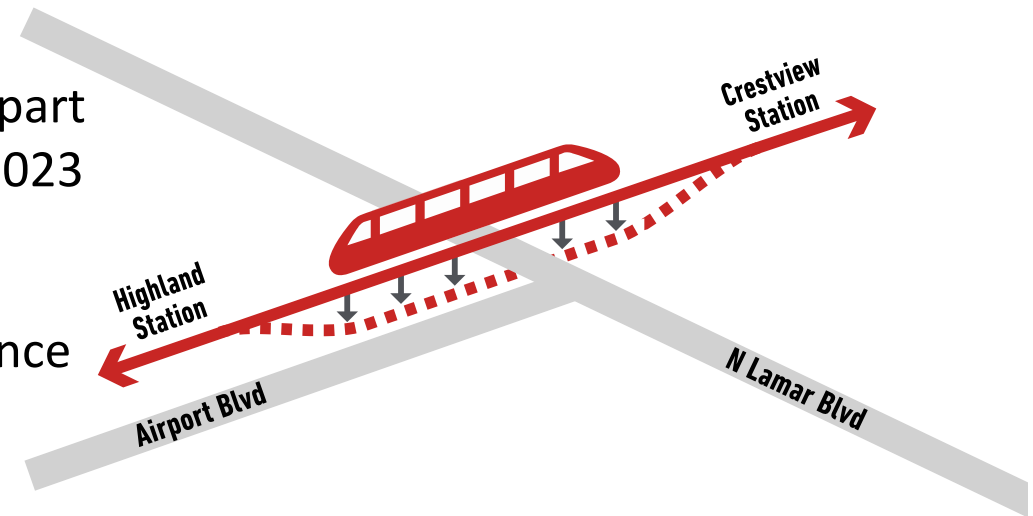
# Red Line MetroRail

## Quiet Zones

- CapMetro has initiated 4 new quiet zones along the Red Line: Kramer, Braker, Rutland and Rundberg Crossings
- Quiet zone safety enhancements being constructed as part of McKalla Station work and will be completed in late 2023

## Crestview Grade Separation Design

- Preliminary design complete and environmental clearance anticipated in late 2022
- Federal grant application to be submitted in late 2022
- Coordination with ATP, City of Austin and TxDOT on long- and short-term improvement opportunities is ongoing



# MetroRapid Pleasant Valley & Expo Center Lines

## Overview

### Working towards FTA Small Starts Grant Agreements (SSGA)

- Estimated \$64M federal investment in MetroRapid
- Stations: 100% design reached; inspection of prototype in early December
- Permitting and schedule coordination among Project Connect partners continues
- \$1.5M investment from City of Austin for additional active transportation connections and improvements (i.e., sidewalks, shared use paths & more)

### Pleasant Valley Line – under construction

- 3 stations completed & ~5 stations in final design or permitting

### Expo Center Line – under construction

- 6 stations completed & ~5 stations in final design or permitting



Oltorf/Pleasant Valley Station

# MetroRapid Park & Ride Facilities

## Expo Center Park & Ride (Expo Center Line) – *in final design*

- CapMetro Board authorized the purchase of 8 acres from the City of Austin and in coordination with Travis County (Expo Center operator)
- 150 parking spaces & 8 bus bays with overhead charging
- New traffic signal at Decker Lane/Colony Loop; public electric vehicle charging space connections; wheelchair charging

## Goodnight Ranch Park & Ride (Pleasant Valley Line) – *in final design*

- CapMetro collaborating closely with Benchmark (developer) on P&R working towards acquisition and site plan process in 2023
- 75 parking spaces & 4 bus bays with overhead charging
- New traffic signal on Slaughter Lane & bus pull out in Slaughter for connections to other transit routes; wheelchair charging



# Disadvantaged Business Enterprise (DBE) & Worker Protections

- ☑ **Contracts awarded to date or in pipeline have followed CapMetro's DBE program**
  
- ☑ **Contracts include:**
  - Living wage at time of contract execution or Davis Bacon Wage, whichever is higher
  - Workers compensation insurance
  
- ☑ **On-site Monitoring to verify all JPA worker protections**
  - On-site monitoring and reporting services provided by a third-party vendor, accredited by Worker's Defense Project
  - Contracted on-site monitoring is in addition to wage and safety monitoring completed by CapMetro as part of our requirements as a federal funding recipient

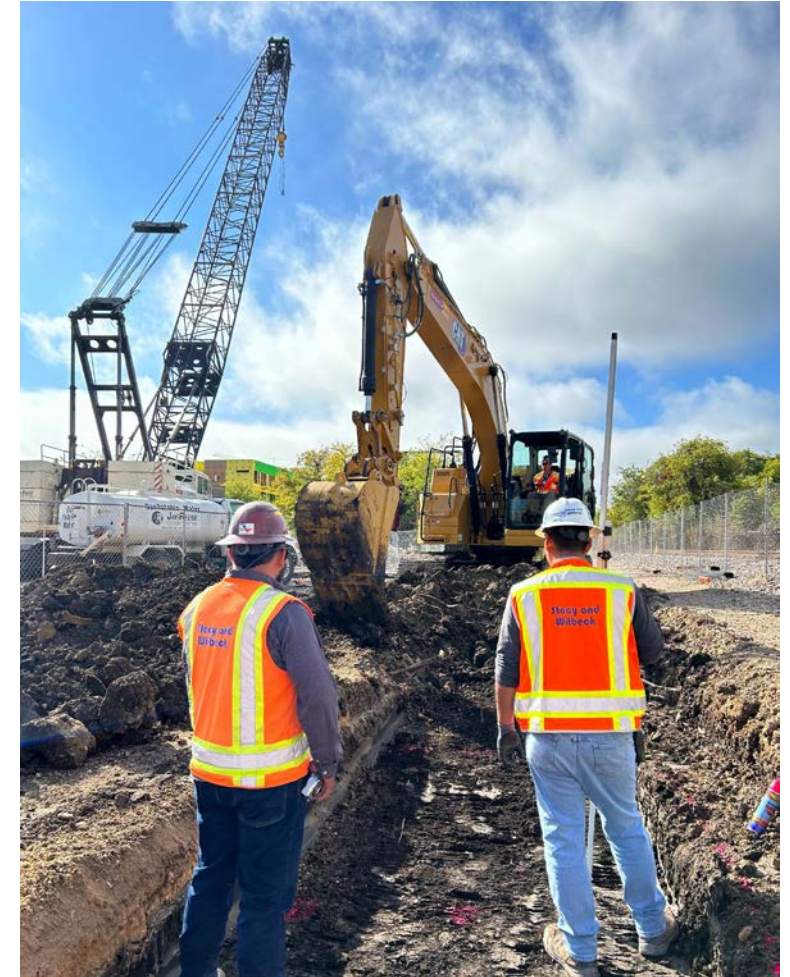


Photo courtesy @StacyWitbeck [Twitter]

# Coming Soon: Updated Fare Programs

Fares for services delivered as part of Project Connect will be part of CapMetro's fare structure and policy.

- **Amp** is a new stored-value fare card and app that provides access to fare capping and Equifare and increases transit speed by encouraging customers to pay fares before boarding
- **Fare capping** prevents customers from being charged more than a day pass in a day, or a month pass over the course of a month
  - Enhancing equity by ensuring everyone has access to discounted monthly pass, not just those who have the means to prepay at the beginning of a month
- **Equifare** is a new fare category for those making below 200% of the federal poverty level
  - Available in addition to existing reduced fare programs (Reduced Fare category, free fares for children, etc.)
  - Customers qualify by already receiving services or participating in other programs (utility bill discounts, food stamps, etc.)

## Fare Capping Example:



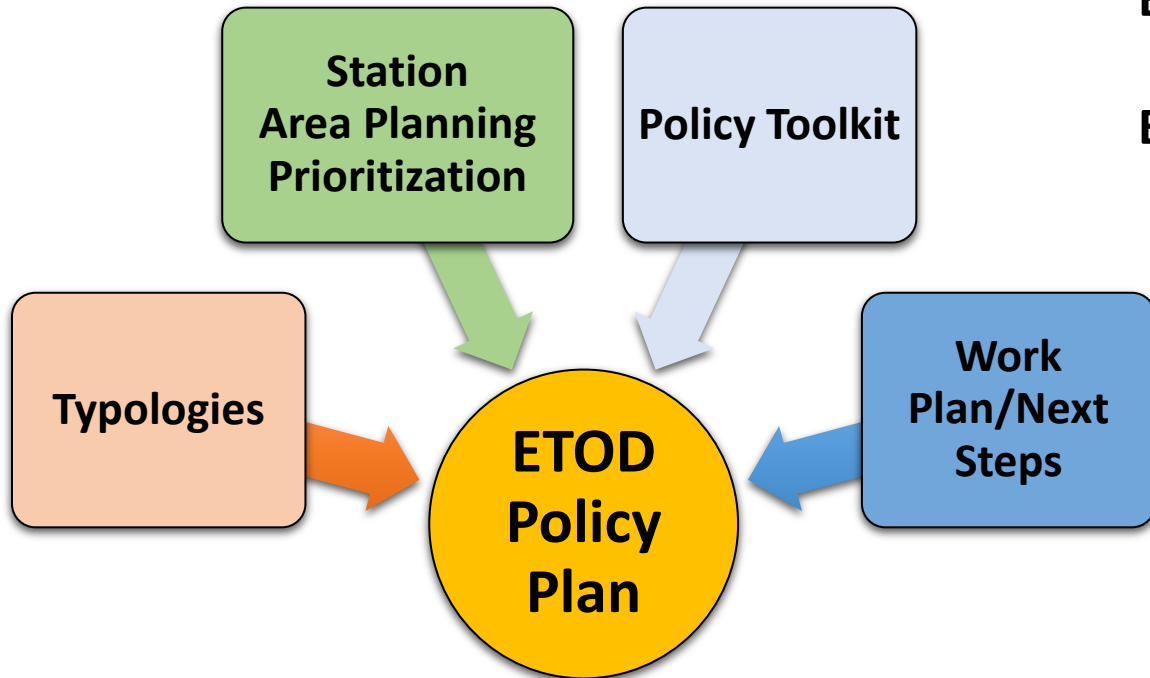


# Equitable Transit Oriented Development

- Equitable Transit Oriented Development (ETOD) applies an equity lens on Transit Oriented Development to:
  - Create new economic opportunities for residents of all income levels;
  - Mitigate displacement and potential, unintended adverse outcomes of new development
  - Encourage market-supported development along transit corridors.
- CapMetro received two FTA TOD Pilot Planning grants totaling \$1.65M to develop TOD planning framework to support Project Connect Light Rail
  - Land Use and Economic Development are part of FTA Capital Investment Grants Rating Criteria for federal funding for transit projects
- Partnership between transit agency (CapMetro) and land-use authority (City of Austin), plus co-creation of process, decision framework and deliverables with the community, is essential to the success of ETOD planning work and Project Connect



# ETOD Policy Plan: *Plan Content*



**ETOD Policy Plan builds on the FTA-funded ETOD study.**

**ETOD Policy Plan includes:**

- ETOD Goals
- A snapshot of how current TODs are performing (MLK Station, Plaza Saltillo, Crestview Station)
- Station Area Typologies and Planning Prioritization
- Equity Based Policy Toolkit with Success Metrics
- Work Plan for station area specific planning and regulatory changes in the short-, medium-, and long-term

# ETOD Policy Plan: *Next Steps*

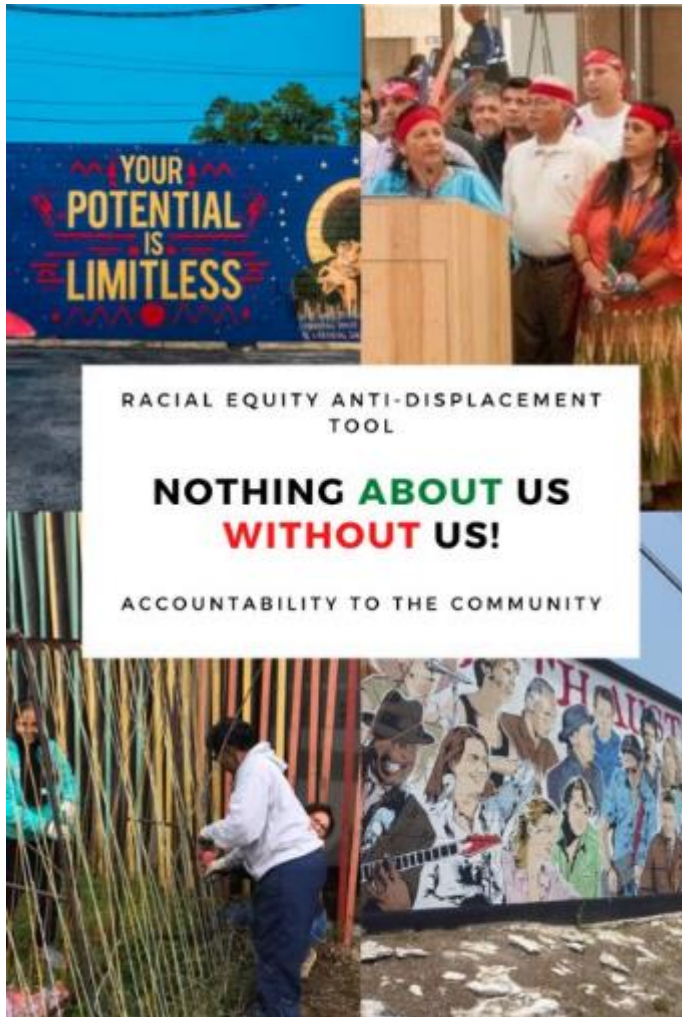
Austin City Council Consideration of Plan and Implementation Activities – Dec. 8, 2022

## Implementation Activities (2023–24)

- Amend Imagine Austin
- Amend Land Development Code to Create ETOD Planning Program
- Create and Apply Systemwide Voluntary “ETOD Overlay” in Land Development Code
- Develop Station Area Vision Plans for North Lamar Transit Center and South Congress Transit Center (**COA + CapMetro Partnership/FTA Grant Deliverable**)
- Develop Recommendations for possible future modifications to East Riverside Corridor Plan (**COA + CapMetro Partnership/FTA Grant Deliverable**)
- Develop Equity Scorecard for evaluation of private development at station areas



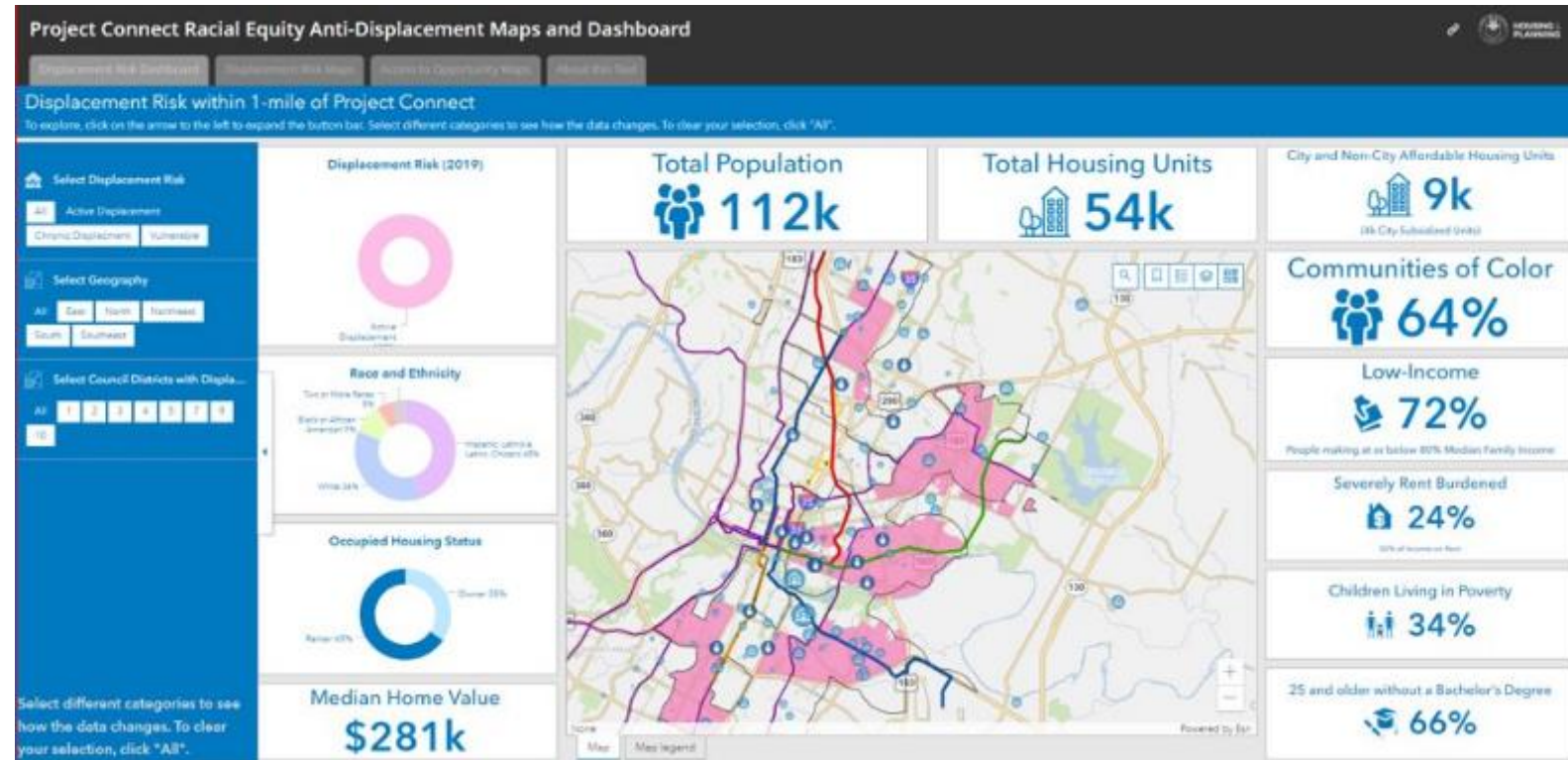
# Framework and Tools Guiding Investments



- Austin voters issued a bold call to action when they approved a **\$300 million anti-displacement fund** along with the Project Connect transit expansion. The Nothing About Us Without Us report, equity tool and map series serve as the guiding framework for investing these dollars.
- The process of developing this framework prioritized the voices of people most impacted by displacement.
- Thirty community members were selected to participate as Racial Equity Catalysts. The Catalysts reviewed displacement data and gathered lessons learned from other cities that have experienced transit-induced displacement.
- Read the full report by visiting: [Racial Equity Anti-Displacement Tool](#)

# Framework and Tools Guiding Investments

- Anti-displacement maps were created to guide how we invest, where we invest and who we protect.
- Interactive dashboard shows areas within one mile of Project Connect stations that are at risk of displacement. It includes demographic information on a neighborhood level that allows the City and CBP's to focus investments with relevant responses.



Interact with these maps at [bit.ly/Anti-DisplacementMaps](https://bit.ly/Anti-DisplacementMaps)

# Displacement Prevention Initial Investments

## \$23 Million – LAND ACQUISITION

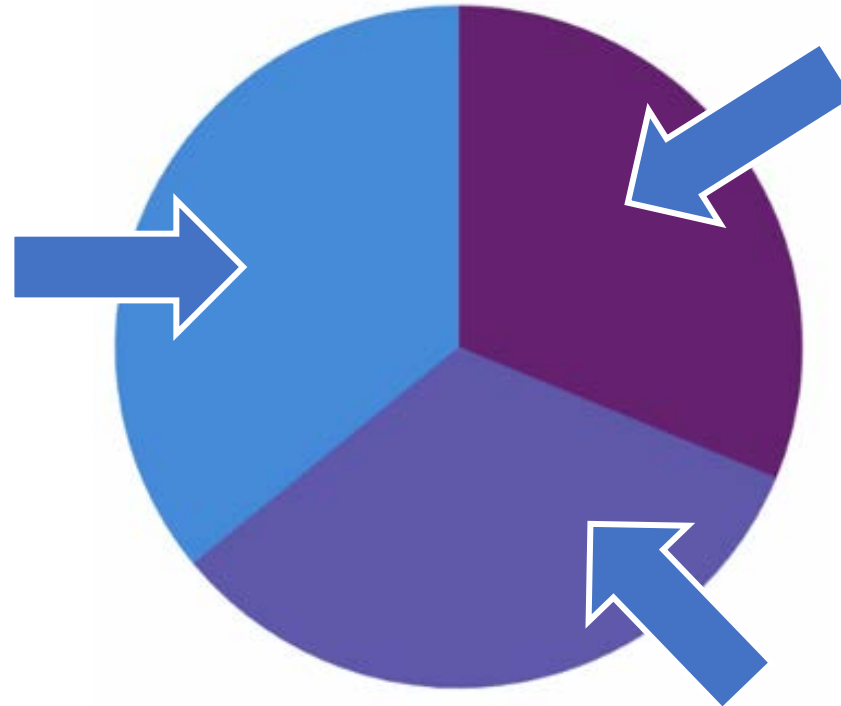
**Preserve:** Acquire multifamily properties to extend or preserve affordability

**Produce:** Purchase sites for future development of affordable housing within one mile of project connect station

Preservation & production of units includes expansion of land and properties within the city-owned community land trust

Includes \$8M to provide loans to eligible 501c3 nonprofit affordable housing developers.

**Achievements:** 162 units of naturally occurring affordable housing



## \$20 Million – COMMUNITY INITIATED SOLUTIONS

**Protect:** investments focus on protecting people who are most vulnerable and living in the most vulnerable communities.

Investments focus include: renter/tenant stabilization; expanding and preserving home ownership opportunities; other anti-displacement strategies that build economic mobility opportunities.

**Achievements:** The Austin Housing Finance Corporation approved the allocation of the \$20M to 14 organizations.

## \$21 Million – REAL ESTATE DEVELOPMENT

**Produce & Preserve:** Rental Housing Development and Ownership Housing Development

Funds will support the acquisition, rehabilitation, and construction of affordable housing. Funds will provide private and nonprofit developers with state tax incentives and bonds and be administered through the City's Rental Housing Development Assistance (RHDA) and Ownership Housing Development Assistance (OHDA) programs.

**Achievements:** 5 developments resulting in 380 rental units (<50%MFI) and 23 ownership units (<80%MFI)

# Displacement Prevention: *Next Steps*

- ❑ Collaborate with Project Connect Community Advisory Committee to provide final budget recommendations for the next 3 years of anti-displacement investments to Council in early 2023
- ❑ Launch marketing campaign to ensure that we are effectively connecting eligible residents with newly available anti-displacement resources
- ❑ Launch publicly facing dashboard which will provide information on where anti-displacement investments have been made and the potential impact
- ❑ Develop Anti-Displacement and Equity Key Performance Indicators with Project Connect partners



# Project Connect Foundational Ordinance & Regulations

## Ordinance approved by City Council on Nov. 15, 2022

- The ordinance addresses needs we know about today that will benefit the project as it proceeds.

## Background

- Oct. 2021: City Council passed Resolution #20211029-003 directing staff to review City Code, Criteria and Regulations.
- The Austin Strategic Mobility Plan (ASMP), voter approval of Project Connect, and the ENO report findings drove the need for this review and ordinance initiation.
- Both ATP and CapMetro Boards passed supporting resolutions.
- Resolution directed staff to:
  - “Review City Code, including LDC, Criteria Manuals and permitting procedures to identify impediments to design, construction, implementation and operation of Project Connect.”

### RESOLUTION NO. 20211029-003

WHEREAS, the Austin Strategic Mobility Plan (“ASMP”) (Ordinance No. 20190411-033) is the transportation element of the Imagine Austin Comprehensive Plan and calls for a 50/50 mode share by 2039, which includes increasing use of sustainable modes such as walking, bicycling, teleworking and transit;

WHEREAS, City Council adopted Resolution No. 20190808-081 directing the City Manager to “analyze and report on options for the City of Austin and other related or interested public or private entities to leverage resources to support the creation, operation, and maintenance of a high-capacity transit system”;

WHEREAS, Austin voters approved Project Connect, the regional high-capacity transit system, on November 3, 2020;

WHEREAS, on December 18, 2020, the City of Austin and the Capital Metropolitan Transportation Authority created a local government corporation named the Austin Transit Partnership Local Government Corporation to aid the City and Capital Metro and act on their behalf to accomplish the governmental purpose of implementing the Project Connect System Plan;



# Design Review, Permitting & Utility Coordination



## Design Review

- The City's Project Connect Office (PCO) coordinated a review of the 30% Orange and Blue Line designs with over 25 City departments
- Process included walkthroughs, initial reviews, comment resolution meetings and final comment close-out



## Permitting

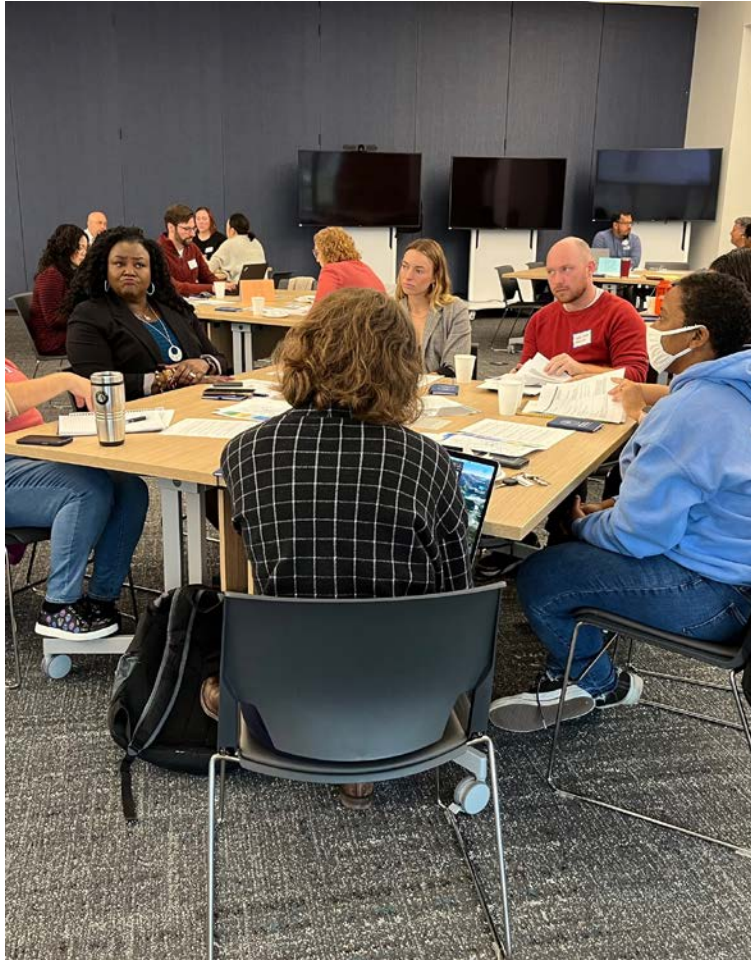
- PCO providing permitting and applicant support to CapMetro for MetroRapid, MetroRail to ensure process is as efficient as possible



## Utility Coordination and Utility Rules of Practice (UROP)

- PCO worked with ATP and City utility departments to develop the UROP
- UROP: agreed upon methodology for reviewing and approving utility conflicts guiding design work for light rail
- Currently in administrative approval process

# Centering Community Values



 **CapMetro**   
@CapMetroATX

Join us in person TODAY at 5:30pm in East ATX for a community meeting about the 3 potential fare programs coming to CapMetro: fare capping, Amp, and Equifare.

Meeting info here: [capmetro.org/fares-passes/f...](https://capmetro.org/fares-passes/f...)



The graphic features a yellow background on the left with the text "POTENTIAL FARE PROGRAMS" in blue. On the right, a hand holds a blue "AMP" transit card with the CapMetro logo.



# Centering Community Values



 Austin Transit Partnership  
@ATP\_org

Thanks to everyone who came out to a SOLD OUT Industry Day at the @ATXConventions Center yesterday.

Our teams were happy to discuss the many upcoming business opportunities surrounding the #ProjectConnect program.





# Agenda Item 2

Staff Briefing & Discussion on the  
Status of the Light Rail Implementation Plan

# Updated Light Rail Implementation Plan: *Recap*

- July & August 2022:
  - Addressed rising light rail costs
  - Briefings to ATP Board, COA Mobility Committee, and Capital Metro Joint Committee
- September through present:
  - Developed and advancing a new workplan to determine phasing options for the light rail project

*Need to align program scope and sequencing to available funding*

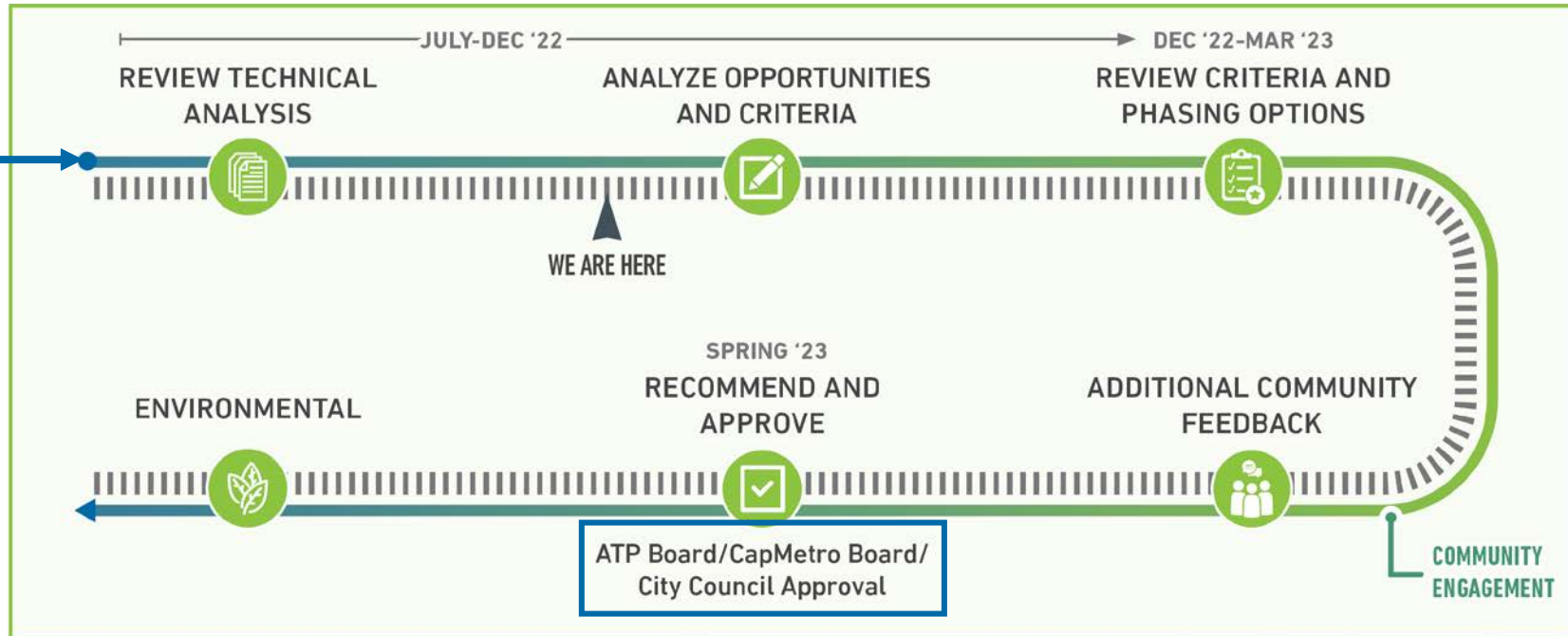
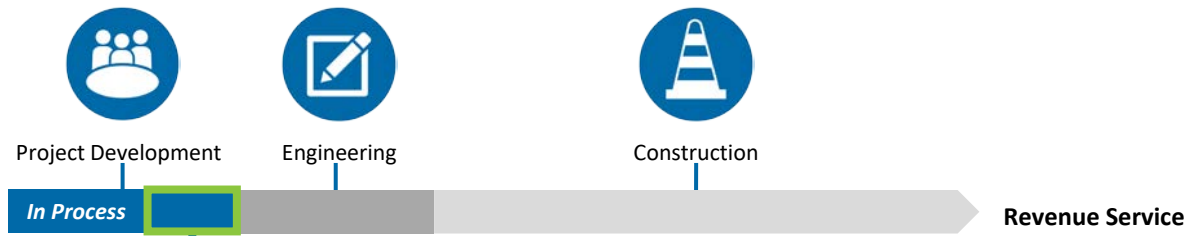
# Workplan



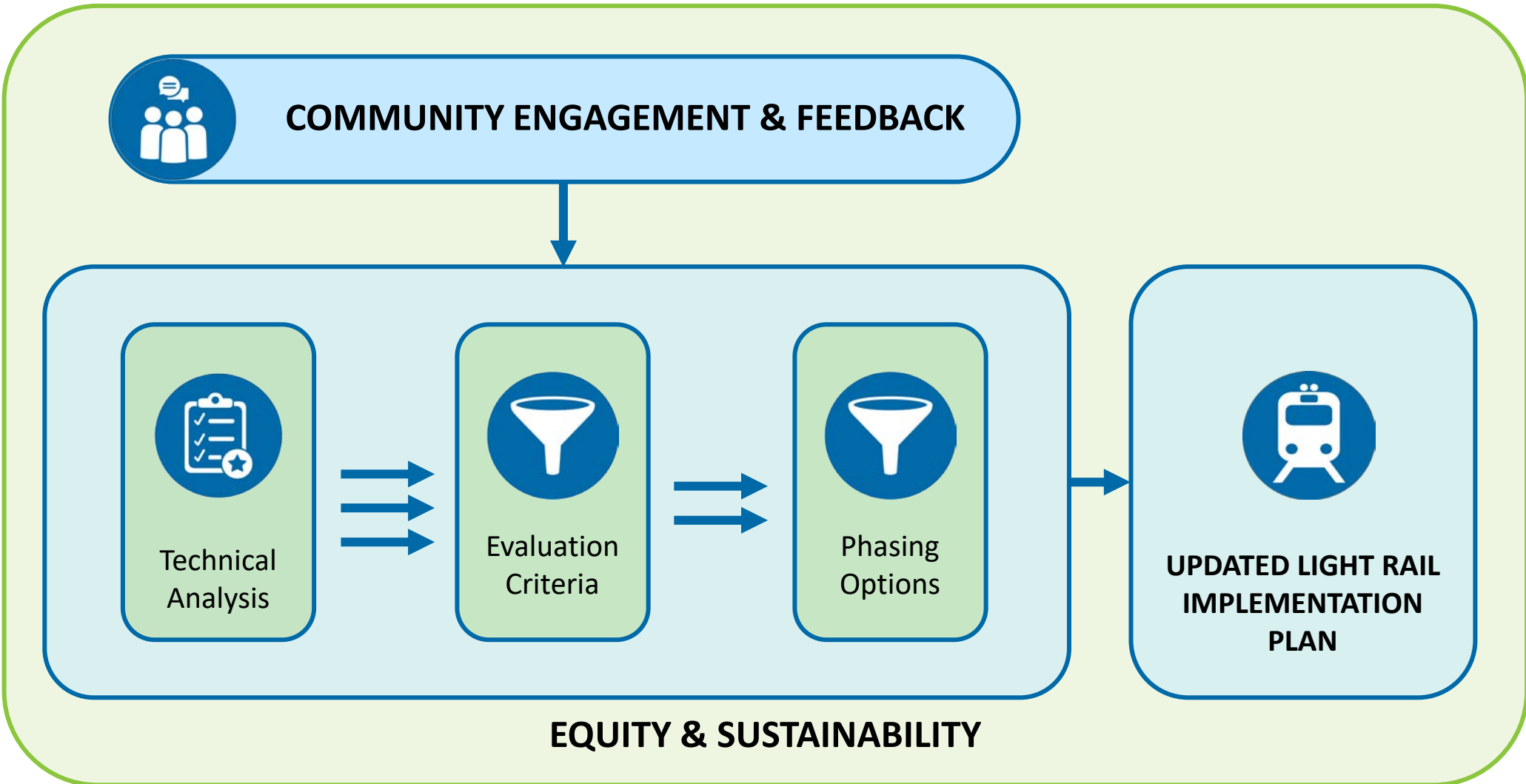
## Objective:

- Develop technical solutions that are aligned with our funding capacity and reflect our community values and aspirations
- **Spring 2023:** Determination of Light Rail scope and phasing

# Federal Grant Process & Workplan



# Evaluation Process





# Applying Equity & Sustainability



## How will Project Connect:



Impact core riders and transit-dependent riders (*e.g., access, reliable service*)



Preserve or enhance community character and community values (*e.g., placemaking*)



Bring co-benefits to transit riders (*e.g., shade, health equity*)

# Technical Analysis: *Critical Inputs*



## *Technical Analysis: System Optimization Opportunities*

- Analyzing end points for community and multi-modal connectivity
- Identified additional Maintenance Facility sites
- Balancing vehicle length and systems technology with requirements and budget
- Analyzing simplified underground, at-grade and elevated vertical alignments



End Points



Maintenance Facility

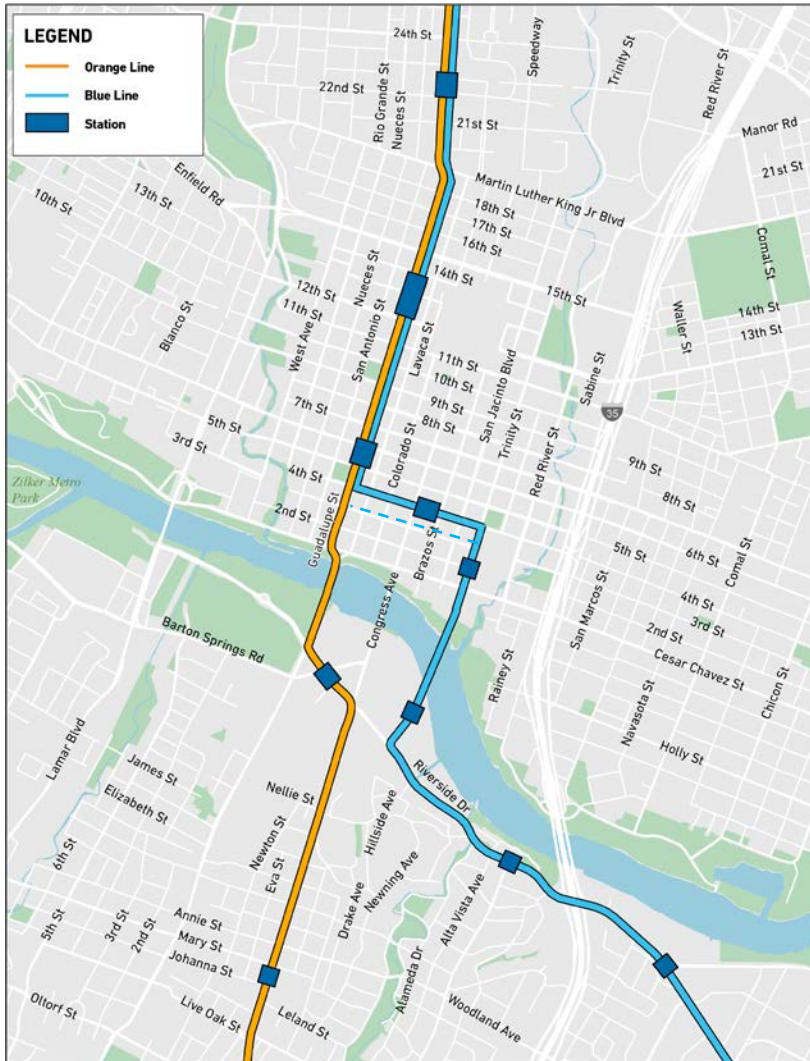


Systems & Vehicles



Vertical Alignment

# Technical Analysis: *Downtown*



## Downtown: Critical Inputs

Downtown Topo

Traffic & Access

Lake Crossing

Platform & Block Length

Station Location

# Planning: *Criteria for Decision-Making*



FTA Grant  
Competitiveness



Community Values  
Criteria

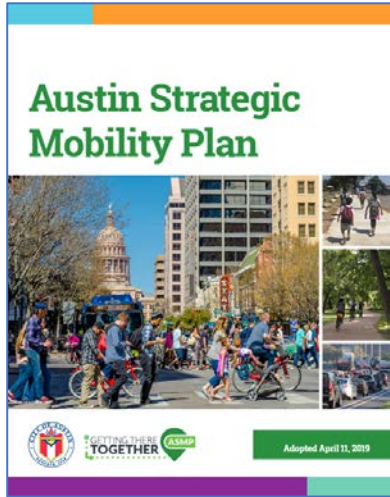
# FTA Criteria



## FTA Grant Competitiveness Evaluation:

 <p><b>Mobility Improvements</b></p>	 <p><b>Cost-Effectiveness</b></p>	 <p><b>Environmental Benefits</b></p>	 <p><b>Financial Plan</b></p>
 <p><b>Congestion Relief</b></p>	 <p><b>Land Use</b></p>	 <p><b>Economic Development</b></p>	

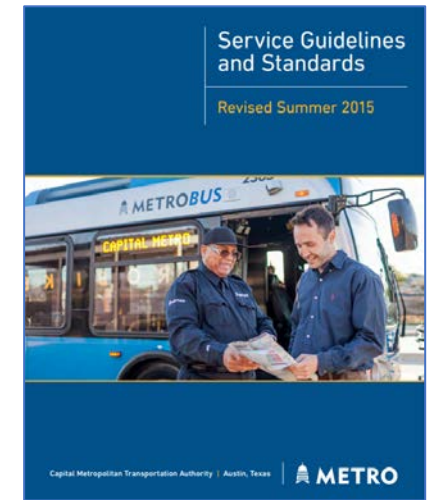
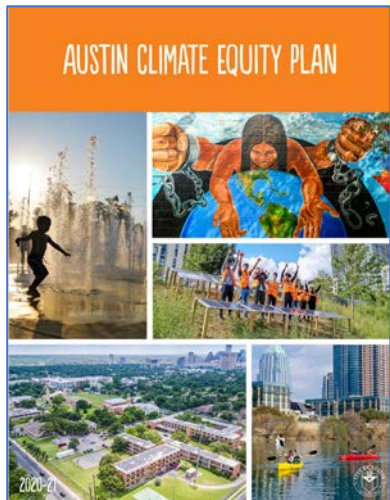
# Community Values Criteria: *Project Roots*



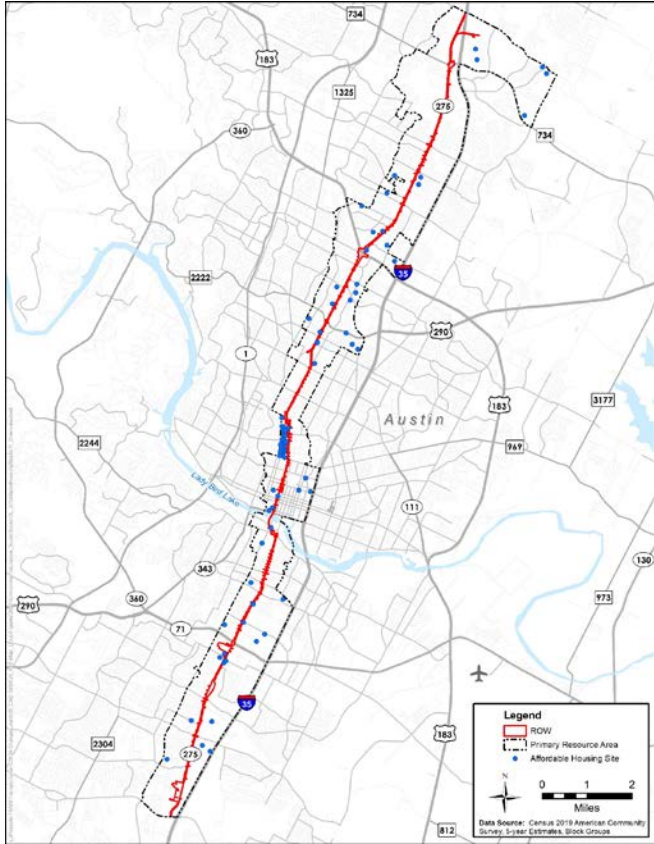
**RESOLUTION NO. 20200807-003**

**WHEREAS**, the Austin Strategic Mobility Plan (“ASMP”) (Ordinance No. 20190411-033) is the transportation element of the Imagine Austin Comprehensive Plan; and

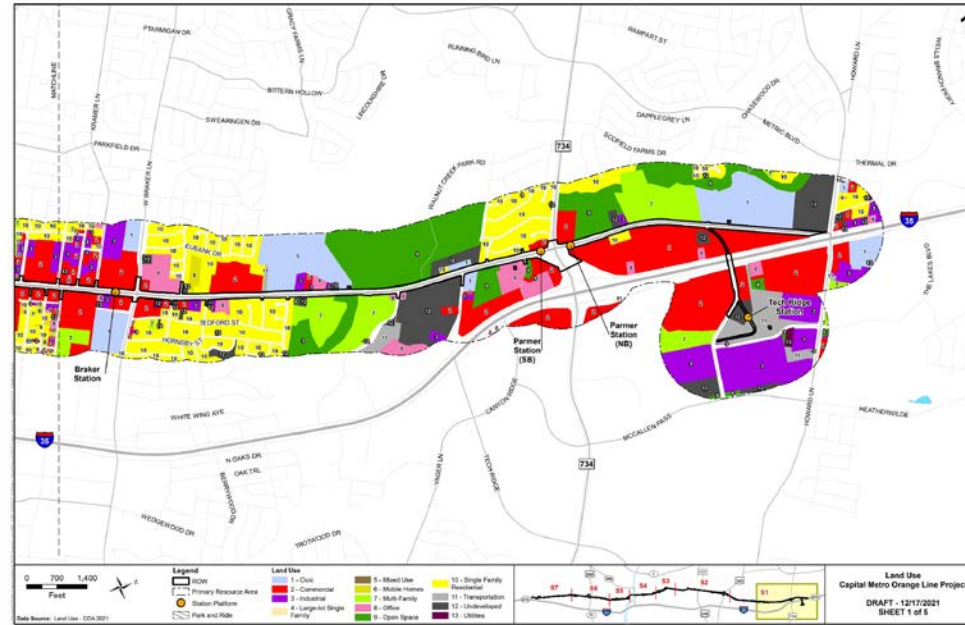
**WHEREAS**, the ASMP establishes that the policy of the City is to invest in a high-capacity transit system to meet our 50/50 mode share goals, stating that the City “must work with our public transportation partners and enhance services to create an experience that attracts and retains riders” and “unprecedented collaboration between the community, the City, and Capital Metro is critical;” and



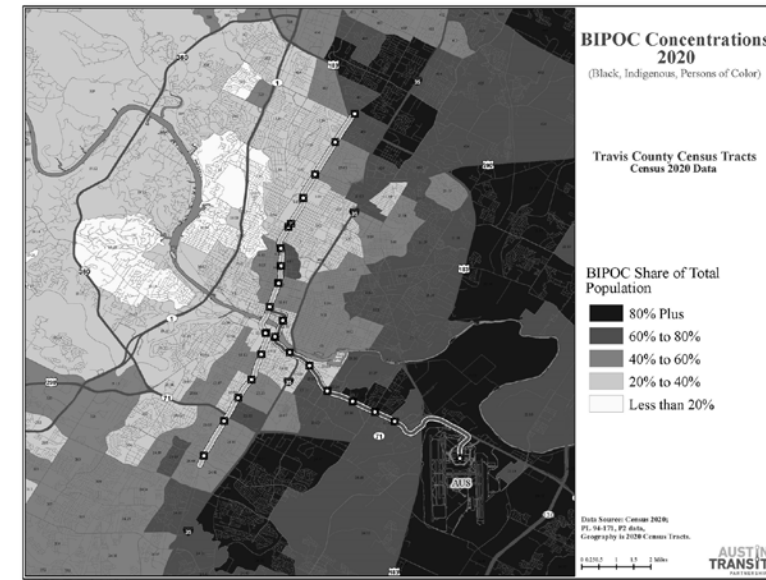
# Community Values Criteria: *People & Places*



Affordable Housing



Transit Supportive Land Use



Demographics

# Community Values Criteria



## Process and Purpose:

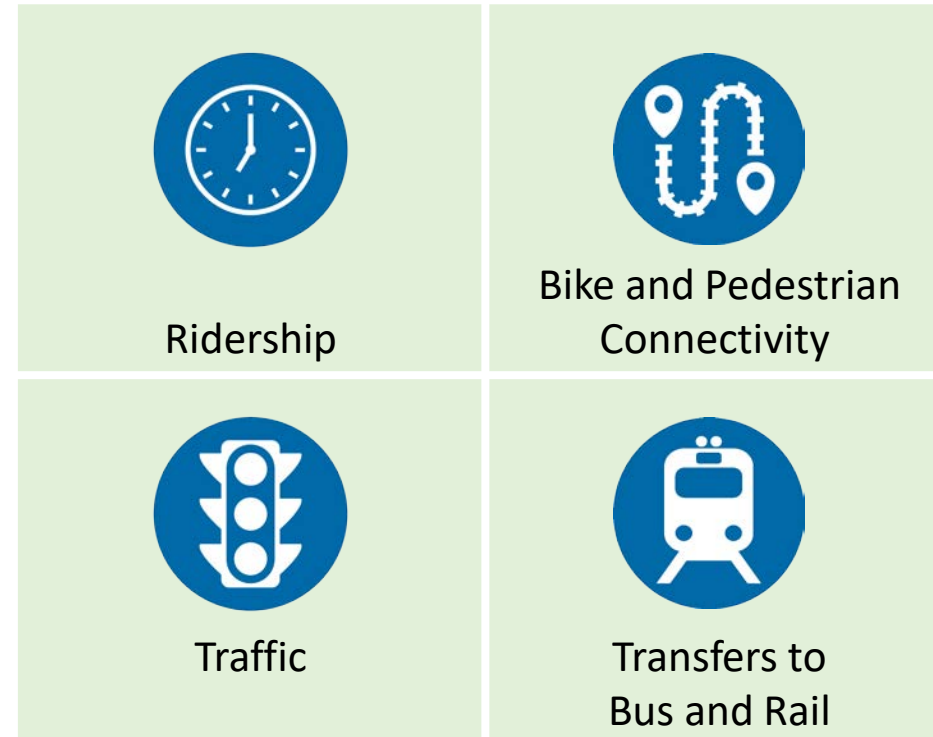
- Validate and refine criteria through community engagement
- Identify key community priorities to inform decision-making about light rail scope and phasing



# Mobility and Customer Experience



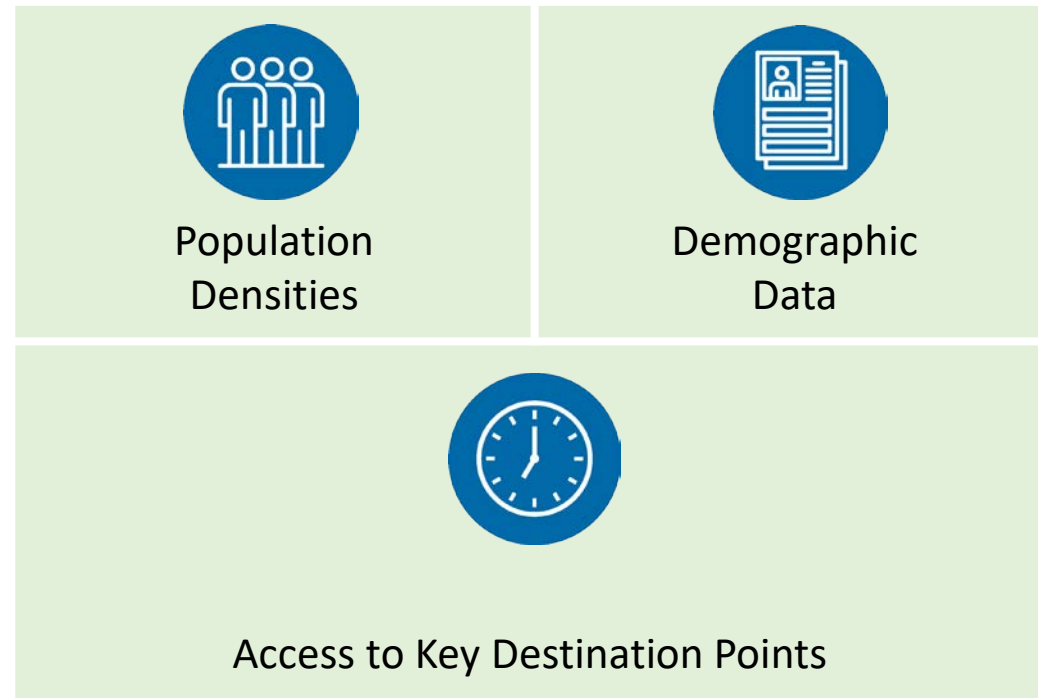
## Evaluate:



# Access to Opportunities



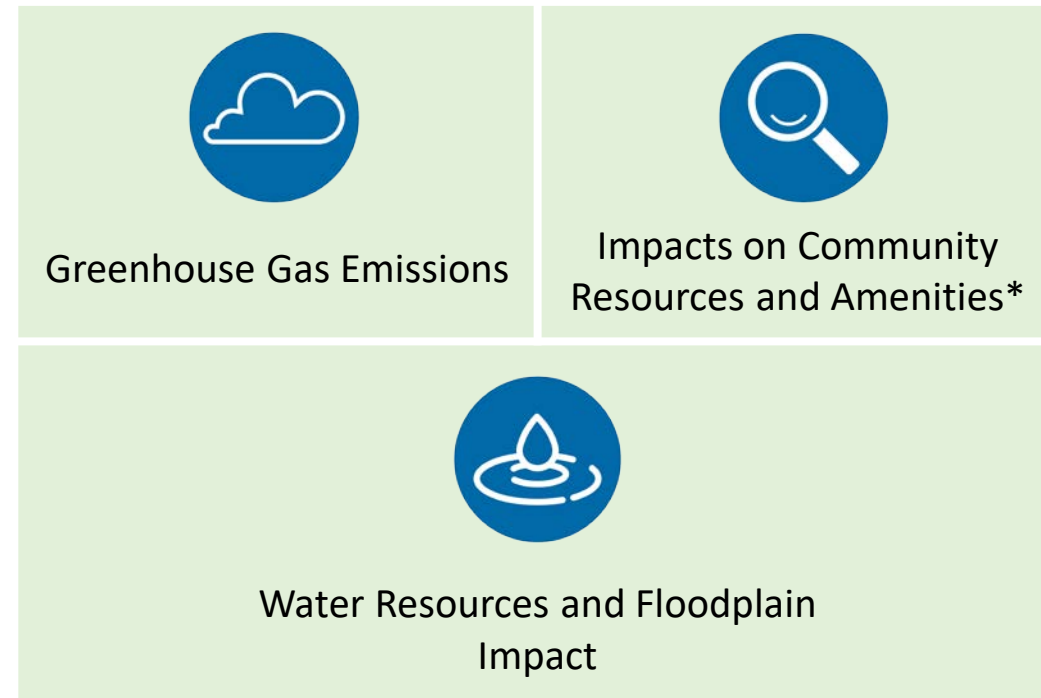
## Evaluate:



# Environmental Benefits



## Evaluate:



\*E.g., parkland, historic squares, public spaces, trees.

# Land Use and Housing



## Evaluate:



# Criteria Development: *Community Engagement*



## Objectives

- Connect with, and receive input from, priority communities
- Collect feedback to inform and prioritize evaluation criteria
- Build trust and demonstrate transparency



## Tools

- Focus Groups for Priority Populations
- Roundtable Discussions
- Community Advisory Committee (CAC)
- Technical Advisory Committees (TACs)
- Project Connect Advisory Network (PCAN)
- Elected Leaders
- Business Community Outreach
- Pop-Ups and At-Stop Outreach
- Social Media and Earned Media

## *Community Advisory Committee (CAC)*

*Helping shape  
Community engagement  
&  
Design principles*



**Thank you for your  
partnership and collaboration.**